

SYLVANIA

32' RGB Color Changing Strips

Application

SYLVANIA LED RGB Flexible Light Strips allow you to accent your favorite spaces and enhance life's many moments in 16 different colors. Our indoor LED light strips are simple to install and can be cut for customized length in places such as bookcases, entertainment units, or under cabinets.

Benefits and Features

- With an IR remote control, easily control the look with four different dynamic modes as well as dimming
- 16 different colors
- Comes with clips to help secure the strip during installation

Electrical

- Dimmable via remote

Rated Life

- 30,000 hours (L₇₀)

Warranty

- 1-year
- NLB Trusted Warranty Program

Ambient Operating Range

- -14°F to +104°F (-10°C to +40°C)

Certifications and Listings

- cETLus
- FCC
- RoHS



Specification Data

Catalog #	Type
Project	
Comments	
Prepared by	

Ordering Guide

LED	RGB	FLEX	XXFT	STARTERKIT	RP
LED	Lamp Type RGB = Color Changing	Flexible Light	Length 32ft	Starter Kit	Retail Pack

Ordering Information

Item Number	Ordering Abbreviation	Wattage (W)	Input Voltage (V)	Typical Lumens (lm)	Dimmable	CRI	Color Temperature (CCT)	Color/Finish
65636	LEDRGBFLEX32FTSTARTERKITRP	24W at 32ft	120VAC	550 lm at 32ft	Yes	>80	RGB	White PCB

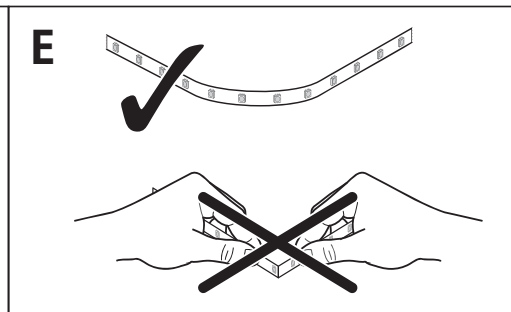
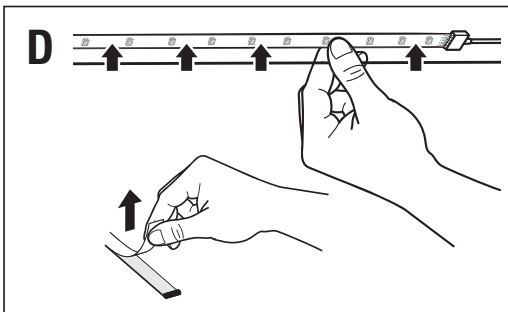
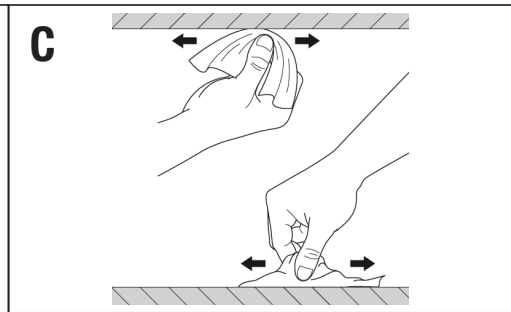
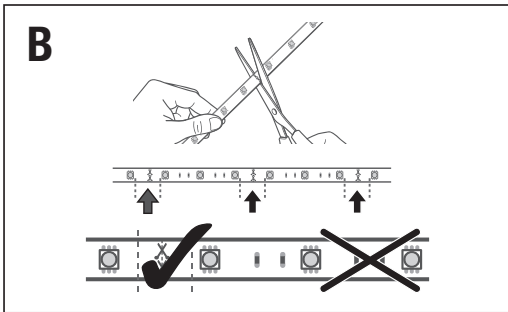
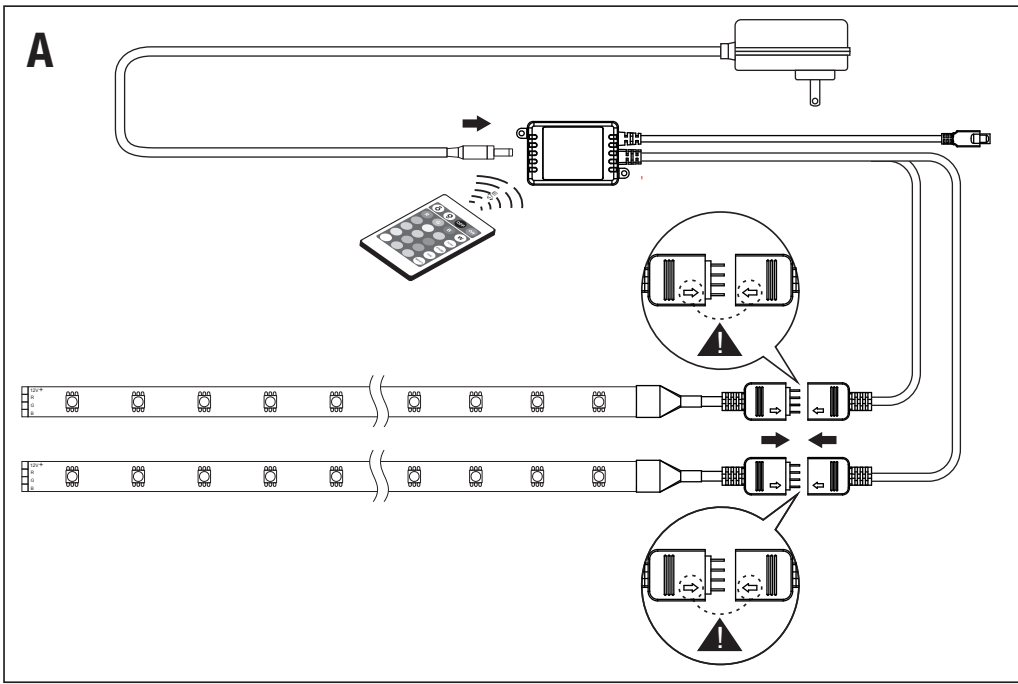
Physical Information

	Length	Width (in)	Height (in)
32' RGB Color Changing Strip Lights	16.4ft	0.39	0.06

Installation

1. Once the final mounting position has been determined, clean the surface to assure the self-adhesive backing will adhere properly. It is important that the mounting surface needs to be smooth, dry, and free from oils and waxes, in order for the strips to adhere to the surface correctly (Figure C). For best results, apply the strip at a room temperature range of 68°-86°F (20°-30°C). The flex strips can be installed on curved and irregular surfaces, but avoid sharp bends as the light strip could be damaged (Figure E).
2. Measure the length of the area where the flex strip will be placed. Each flex strip is 16ft long. If the strips end up being too long, shorten the end of the strip by cutting at one of the lines indicated by the scissors icon (Figure B). Connect all the elements together and apply power to the flex strip to test that the strip is working before mounting the final product (Figure A).
NOTE: Once cut, the section of the flex strip can no longer be connected to the other flex strips or the universal connector.
NOTE: Can only connect a maximum of 2 strips for a length of 32ft.
3. Remove the protective layer covering on the back of the flex strip. Carefully place each strip in the final mounting position as the adhesive is permanent and strip cannot easily be moved (Figure D).
4. Press the flex strip firmly in place and hold it for 5 seconds so that the tape adheres to the mounting surface. Make sure each of the flex strips are tightly connected to each other before continuing to mount (Figure D).
5. Connect the controller to the flex strip. Make sure that the arrow icon on the controller connector matches with the 12V+ marking on the connecting strip (Figure A).
6. Connect AC/DC adapter to controller (Figure A).
7. Plug in the AC/DC adapter into the power outlet.
8. To turn the strips on, remove the clear pull tab from the remote so the battery can make contact. Press the ON button on the remote to light up the strips.

Installation (continued)



LEDVANCE LLC
200 Ballardvale Street
Wilmington, MA 01887 USA
Phone 1-800-LIGHTBULB (1-800-544-4828)
www.ledvanceUS.com

SYLVANIA and LEDVANCE are registered trademarks.
All other trademarks are those of their respective owners.
Licensee of product trademark SYLVANIA in general lighting.
Specifications subject to change without notice.

 /sylvania  /sylvania