

MAGNETIC ON/OFF SWITCH



Hands-free light switch connects easily to 12-24V DC power source.
Turns on LED light fixture just by opening a drawer or cupboard door.

Features

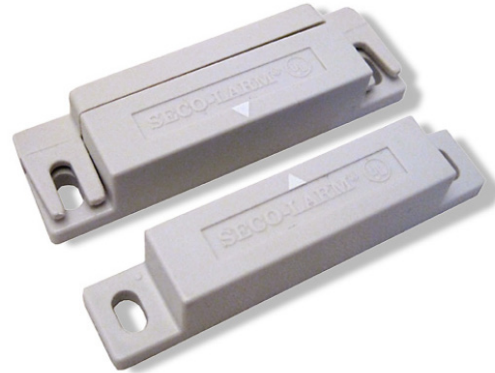
- When two components are in close contact, the electrical circuit is broken and the light switches off;
When the two parts separate from each other (ex: when door opens) the switch turns the lights on
- Simple installation
- Includes protective housing that slips over the connection terminals on the wired component

Applications

Drawers | Cabinets | Closets | Cupboards

Installation

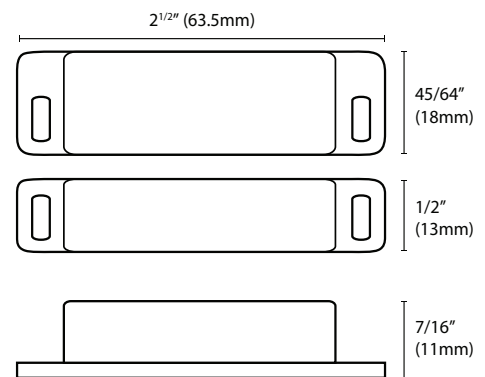
Connect the negative wire of the low voltage LED power source to one terminal on one component; connect the negative wire of the LED light fixture to the terminal; slip the protective housing over the terminals. After connecting the positive wires of the LED power source and the LED light, attach the unwired component to the moving surface (drawer or door) and attach the wired one to the fixed surface (cabinet, shelf, drawer housing or door frame). Make sure the white arrows of the two parts point towards each other.



Specifications

Input Voltage	12-24V DC
Output Power	Max. 10W - 0.83A (12V), 0.41 (24V)
Wattage	10W MAX @ 12V DC
Housing	PC
Type	NO (Normally Open) and NC (Normally Closed) capable
Dimensions	L2 ^{1/2} x W1 ^{1/4} x 1/4" (L64 x W32 x 6mm)
Working Temp	-24°C~60°C (-10°F~140°F)
Warranty	1 Year

Dimensions



Ordering Codes

LS - MAG - SW